




Hotel in "Western Town" at RANCHO MARIA



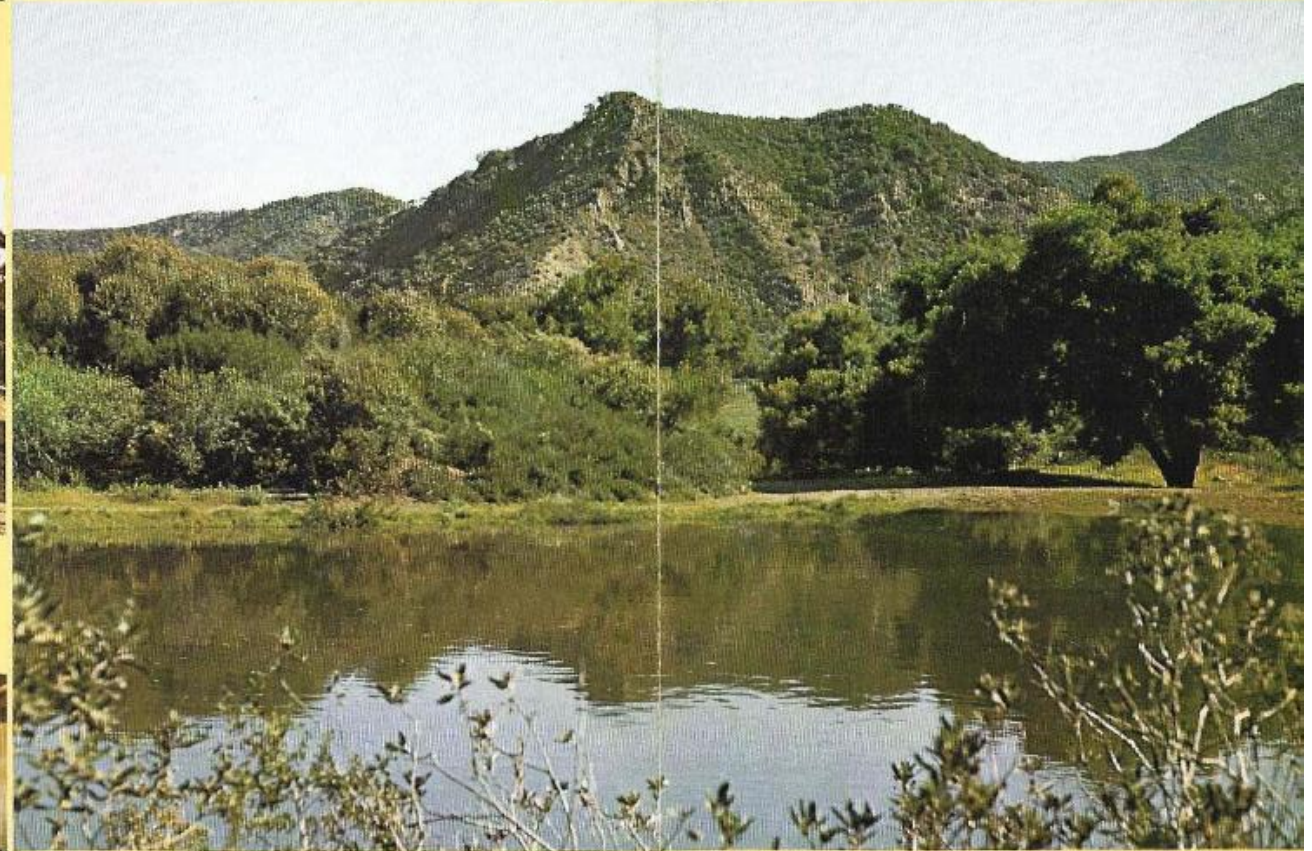
Street scene in "Western Town" at RANCHO MARIA

Saloon in "Western Town" at RANCHO MARIA
Features 40 foot long bar



Rancho Maria **Sable Ranch**

25933 Sand Canyon Rd. Canyon Country, CA. 91351 25975 Sand Canyon Rd.



Mountain Lake adjacent to log cabin and barn

For Further Information and Reservations
and for Appointment Contact:

FRANK'S CAMERA

5715 N. Figueroa St., L.A., CA. 90042

CALL FOR APPOINTMENT!

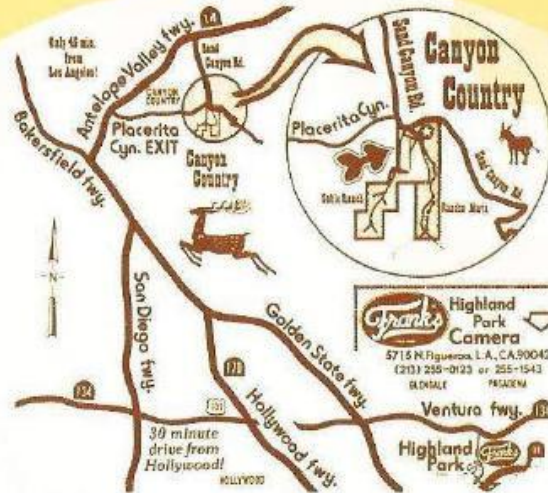
Ranch Location Manager -

DEREK: (661) 252 - 9751

Frank and Vera - owners: 323 255 0123



Spanish Hacienda at SABLE RANCH



RANCHO MARIA and **SABLE RANCH** share about a mile of contiguous boundary, and then branch out into individual majestic canyons leading up into unique private waterfalls!

Surrounding the two ranches on three sides is the Angeles National Forest, with its forbidding steep mountains and canyons, giving the ranches unequalled seclusion and privacy, unhampered by smog or coastal fog.

There are many locations on both ranches with no sign of any of the trappings of civilizations, virgin meadows and canyons seemingly untouched by human hands.

RANCHO MARIA and **SABLE RANCH**, with their combined 400 acres of beautiful grassy meadows and canyons dotted with centuries-old oak trees, offer unique opportunities for location filming within Los Angeles County, and only 30 minutes from Hollywood and major film studios.

Each ranch has a large water reservoir, ranch house, and stables. **RANCHO MARIA** also features a majestic "Big Red Barn," corrals, irrigated pastures, tool-sheds, chicken-coops, podium, etc. **SABLE RANCH**, the Spanish location, has an adobe hacienda from the turn of the century, stables, stone accessory buildings, and a small landing strip.

There are parking facilities for hundreds of cars, and machinery, including a large bulldozer, backhoe, scraper/grader, tractors, water truck, dump-truck, and Jeeps, to take on any size project!

Our "Western Street" at **RANCHO MARIA** features a big Hotel-Saloon with an authentic 40-ft. long 1866 bar, and a smaller Saloon, a General Store, Sheriff's Office, Jail, etc.

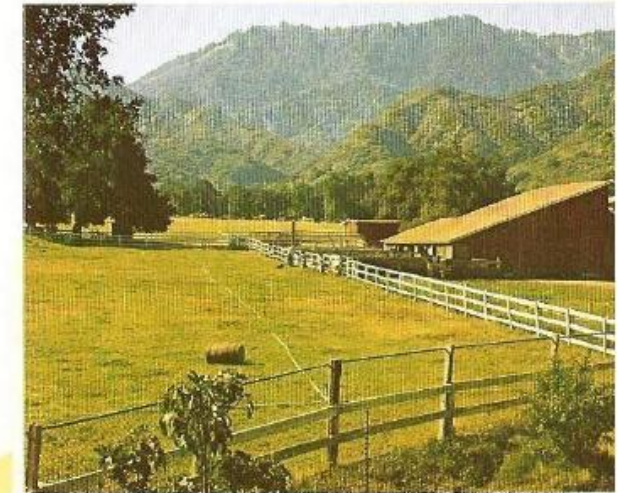
Please call for reservations. Special rates for advertising agencies.



Meadow and Landing Strip at SABLE RANCH



Interior of Hacienda



Red Barn and Green Pasture at RANCHO MARIA